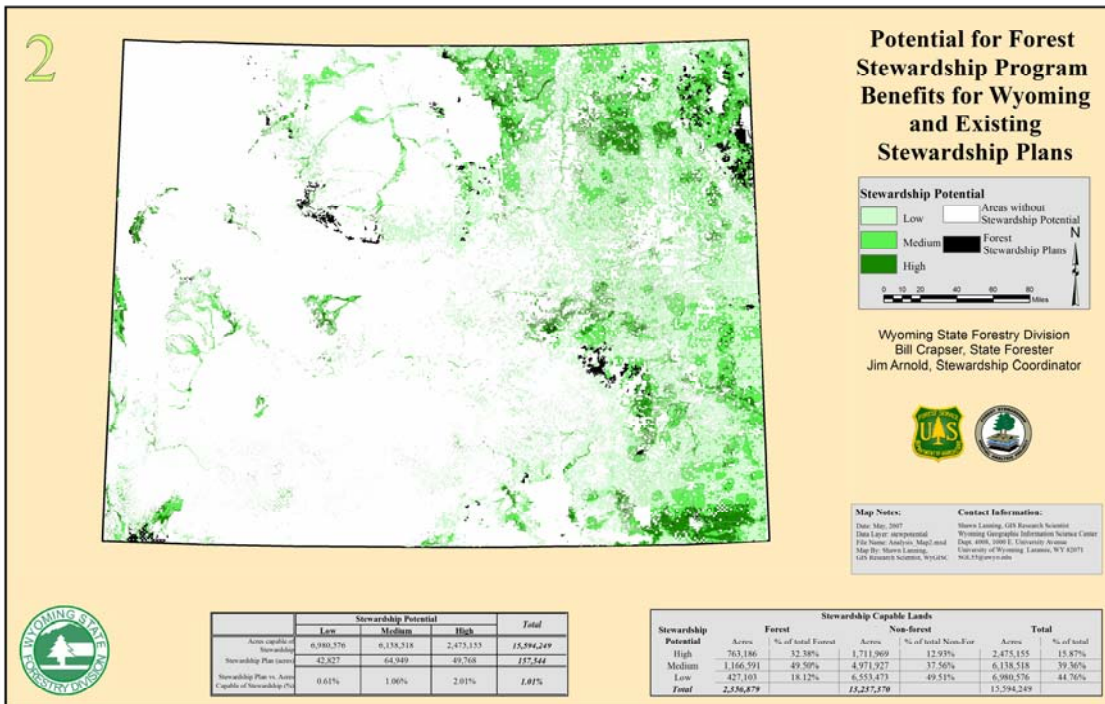
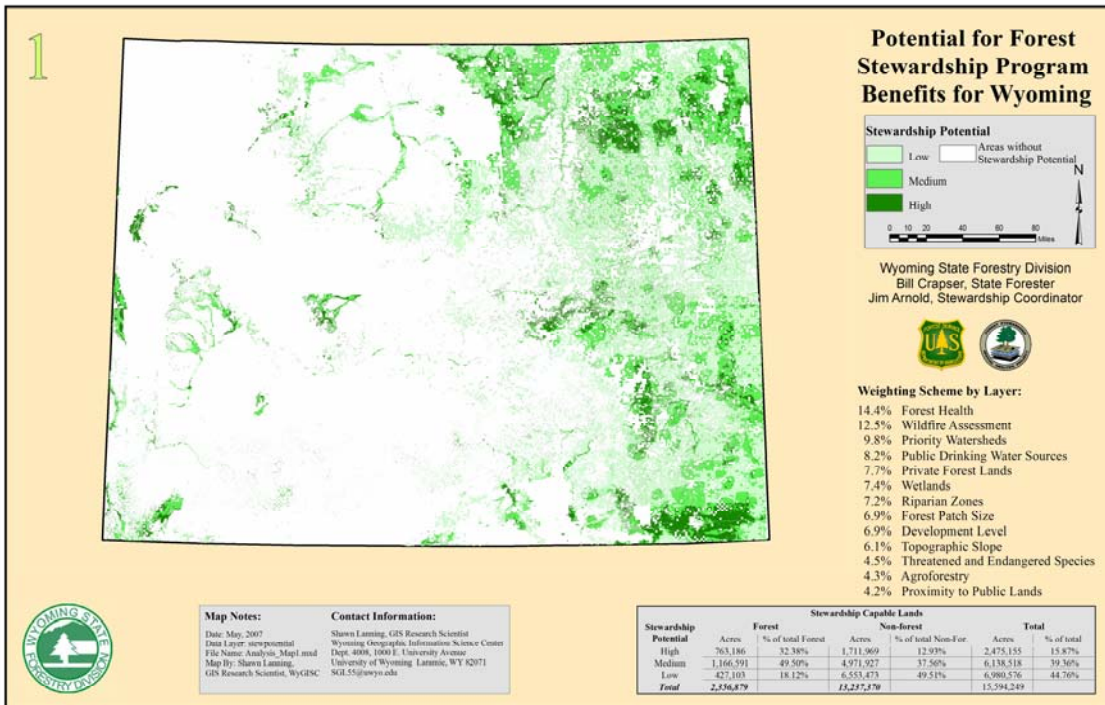


# Appendix D

## Wyoming State Forestry Division Spatial Analysis Project Maps



3



### Forest Stewardship Potential on Private Forest Lands\* and Existing Stewardship Plans for Wyoming



Wyoming State Forestry Division  
Bill Crapsier, State Forester  
Jim Arnold, Stewardship Coordinator



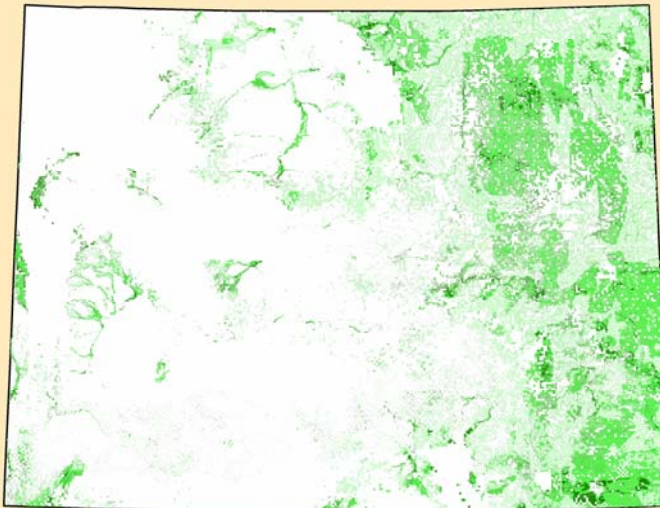
**Map Notes:**  
Date: May 2007  
Data Layer: stewardship  
File Name: Analysis\_Map3.mxd  
Map By: Shara Lanning,  
GIS Research Scientist, WYGISC

**Contact Information:**  
Shara Lanning, GIS Research Scientist  
Wyoming Geographic Information Science Center  
Dept. 4008, 1000 E. University Avenue  
University of Wyoming, Laramie, WY 82071  
501.551@uwyo.edu

Private Forest Lands Stewardship Potential	Stewardship Potential			Total
	Low	Medium	High	
Acres capable of Stewardship	427,103	1,166,591	763,186	2,356,879
Stewardship Plan acres	18,698	39,693	39,288	97,679
Stewardship Plan acres as a percent of acres private forest	4.38%	3.40%	5.15%	4.14%

\* Includes Classes of Land Cover (MRLC):  
41 Deciduous  
42 Evergreen  
43 Mixed Forest  
91 Woody Wetlands

4



### Resource Richness\* Wyoming



Wyoming State Forestry Division  
Bill Crapsier, State Forester  
Jim Arnold, Stewardship Coordinator



**Map Notes:**  
Date: May 2007  
Data Layer: resource\_rich  
File Name: Analysis\_Map4.mxd  
Map By: Shara Lanning,  
GIS Research Scientist, WYGISC

**Contact Information:**  
Shara Lanning, GIS Research Scientist  
Wyoming Geographic Information Science Center  
Dept. 4008, 1000 E. University Avenue  
University of Wyoming, Laramie, WY 82071  
501.551@uwyo.edu

\* Includes Data Themes:  
Private Forest Lands  
Forest Patches  
Proximity to Public/Protected Lands  
Forested Wetlands  
Riparian Areas  
Public Water Supplies  
Slope  
Priority Watersheds  
Threatened and Endangered Species  
Agroforestry